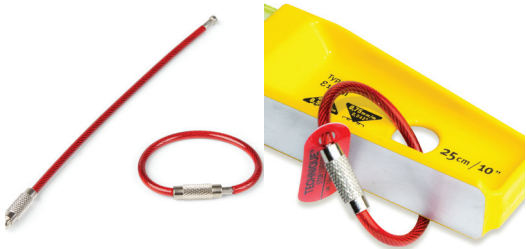




**Installation and Use Instructions for GRIPPS® Dropped Tool Prevention Equipment.**

**GRIPPS® Screwlock Cable**  
**Models: H01030, H01031, H01032, H01033**

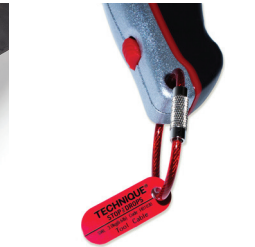


**H01030**  
 Screwlock Cable  
 3.0mm x 120mm/0.1" x 4.75"  
**Max Load: 1.0kg/2.0lbs**

**H01031**  
 Screwlock Cable  
 3.0mm x 150mm/0.1" x 6.0"  
**Max Load: 1.0kg/2.0lbs**



**H01032**  
 Screwlock Cable  
 4.0mm x 160mm/0.15" x 6.25"  
**Max Load: 2.0kg/4.4lbs**



**H01033**  
 Screwlock Cable  
 4.0mm x 200mm/0.15" x 8.0"  
**Max Load: 2.0kg/4.4lbs**

For product support contact us at:

support@gripps.com.au | +61 3 8383 9458

WWW.GRIPPS.COM.AU | @GRIPPSGLOBAL | #CONQUERGRAVITY

**GRIPPS® Screwlock Cable**

**SAFETY INFORMATION**

**⚠️ WARNING** Before using GRIPPS® Screwlock Cables, read all provided safety information pertaining to the use of your Dropped Tool Prevention (DTP) device. **FAILURE TO DO SO COULD RESULT IN INJURY OR DEATH.**

The user of a DTP device bears the responsibility of reading all safety information contained herein. Keep this manual for future reference.

**Intended Use:**

When used properly, GRIPPS® Screwlock Cables can prevent workplace hazards resulting from dropped tools. These may include personal injury and material damage.

GRIPPS® does not approve use of this device for any activities not described in the User Instructions. This device is not intended to be used in any recreational activity, as a personal fall-arrest device or in any other manner not described herein.

**⚠️ WARNING** Misuse of this device could result in serious injury or death.

Adhere to all manufacturer recommendations regarding the operation and maintenance of this device. For additional information, contact GRIPPS® customer support.

**Read and adhere to the following in order to ensure correct operational functionality:**

- Your DTP should never be used as a personal fall-arrest device or restraint system.
- Do not use this device with tools that exceed the specified maximum load/weight.
- A DTP device used in applications that exceed the limits of operation specified by the manufacturer should be considered unsafe and should be replaced.
- Do not tether a tool over 2.5kg/5.5lbs directly to your clothing or person.
- Inspect your DTP device before each use.
- Ensure the DTP device is securely connected to a load rated tool connector or anchor point before use.
- Inspect any tool connector point before it is connected to the DTP device.
- Modification of the DTP device voids all warranties and violates manufacturer recommendations.
- Do not use a tool that cannot be connected to your DTP in the manner specified by GRIPPS®.
- It is unsafe to extend the length of the DTP product by any means.
- Do not use this product if it will create an unsafe working environment.
- Use extra precaution around moving machinery, moving parts, electrical hazards, extreme temperatures, chemical hazards, or combustion hazards.
- Avoid contact between the Screwlock Cable and rough or sharp edges.
- All connected tools and equipment, including connection points, must be compatible for use with this DTP device.
- Always wear appropriate personal protective equipment.

- If a tether has arrested a dropped tool or object, it should be taken out of service and replaced.
- All procedures shown in this instruction are for GRIPPS® Screwlock Cable products only.

**GENERAL USE AND CARE**

GRIPPS® Screwlock Cables are designed to create a secure tool connection point by simply threading the Screwlock Cable through an existing hang-hole/slot in a tool. To create a permanent, load rated connection point on your tool, add a drop of thread-locking compound before screwing shut.

**Recommended Use of GRIPPS® Screwlock Cable:**

1. Use the H01030 & H01031 Screwlock Cable for tools that weigh up to 1.0kg/2.0lbs.
2. Use the H01032 & H01033 Screwlock Cable for tools that weigh up to 2.0kg/4.4lbs.
3. Only attach Screwlock Cable to an existing, engineered hang-hole/slot as per the CAT/SHORE tool tethering methodology.
4. Do not attempt to create your own hole. If a tool does not have an existing hang-hole/slot then use a GRIPPS® Tool Catch and V-Gripp Tape.

**Before Use:**

Thoroughly inspect your GRIPPS® DTP device before each use. Do not use any component that presents deformities or deterioration.

**Screwlock Cable Usage Instructions:**

**To connect to a tool with existing hang-hole/slot**

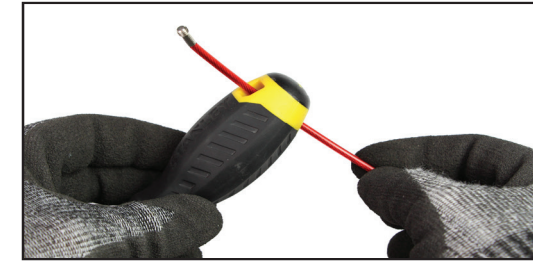
1. Thread Screwlock Cable through hole in the tool.



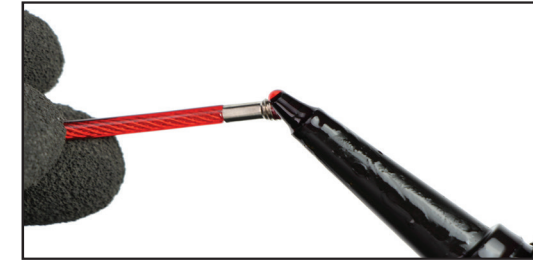
2. Screw the two ends together, ensuring they are screwed fully in and the threads haven't crossed.



**To create a permanent tool connection point**  
 1. Thread Screwlock Cable through hole in the tool.



2. Squeeze a drop of thread-locking compound onto the thread.



3. Screw the two ends together, ensuring they are screwed fully in and the threads haven't crossed.



**After Use Care:**

Clean and inspect the Screwlock Cable and any connected tethers. For tougher stains, use warm water and a mild soap or detergent. Do not use again until dry.

Store in a clean and dry environment. Proper care will help to ensure that it will operate effectively and extend its service.



- instagram.com/grippsglobal
- facebook.com/grippsglobal
- twitter.com/grippsglobal

**Contact Support On**  
 support@gripps.com.au  
 +61 3 8383 9458  
 #ConquerGravity