

Increase in Productivity, Ease of Maintenance, High Level of Safety

KITO *RY* SERIES WIRE ROPE HOIST



For High Demand Applications
and Lifting Expectations

Working Harder For You

KITO PWB has been in Australia since 1923 and began distributing KITO electric hoists and manual hoists in 1986. Since 1923 we have been well regarded in the industry as a supplier of consistently providing high-quality products. We have a well earned and successful history of supply to the Australian, New Zealand, and SE Asian markets.

Over the years we have developed and grown by recognising the value of our customers and responding to your needs. The daily mission of our organisation is to provide you, the customer, with the highest quality in our products, service and support.

In addition to our superior products and customised solutions, we offer a Sales and Customer Service team that is dedicated to serving you, a well qualified Engineering Department to support your technical needs and a full support staff who all know the importance of working together to provide solutions for your material handling projects.

We are working harder to be the supplier-of-choice for all of your hoist and lifting applications.

Table of Contents

KITO RY Series Wire Rope Hoists

Premium Benefits	4
Features and Benefits	6
Standard Specifications and Dimensions	8

Options and Technical Data

Bottom Hook Dimensions	11
Reaction Forces at Rated Load	12
Trolley Wheel Dimensions	13
Duty Classifications	14
Lifting Motor Ratings	14
Compliance	15
Product Code	15

KITO RY Series Wire Rope Hoists

Premium Benefits

1 Increase in Productivity

Low-Load High-Speed function

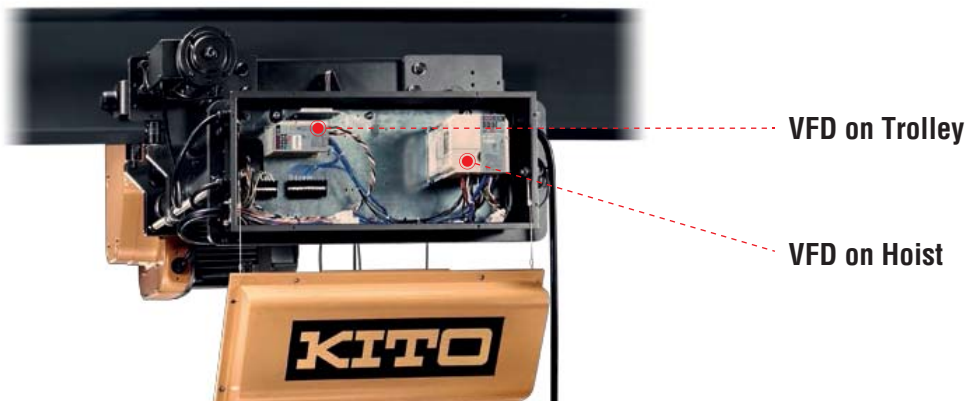
Allows for hoist operation at **1.5 times the standard high speed** with a load less than 25% of rated capacity to increase productivity.



VFD Dual Speed Controls on Hoist and Trolley

Provides ultimate lifting and lowering accuracy with:

- Anti-jogging feature gradually slowing down a load
- Soft start/stop minimises load swing
- Adjustable high and low speed
- Electronic overload protection
- Thermal overload protection
- Condition monitoring
- Phase protection
- Fault finding



2 Ease of Maintenance

Count Hour Meter

The number of starts and operating hours are easily accessible and displayed on the LED at the built-in inverter. This enables users to perform maintenance and inspections accordance with the frequency of use, thus a valuable tool for preventive maintenance.



High Performance Motor Brakes

The Pull-Rotor motor brake on 5t and Magnetic Disc Brake on 10t provide reliable operation and durability.

Maintenance free up to 1 million starts.



Pull-Rotor motor brake: 5t

Magnetic Disc Brake: 10t

3 High Level of Safety

Electronic Overload Limiter

Detects overload instantaneously and shuts off the circuit for lifting.



Externally Adjustable Upper/Lower Limit Switches

Set the desired range of operation with easy adjustment.



Upper Emergency Paddle Limit

Final limit in accordance with Australian Standard AS 1418.



Guide Rollers and Rubber Trolley Bumpers

Reduced wheel friction and noise providing smooth travel and increased life of wheel and beam. Provides protection from collisions.

Electronic Thermal Motor Protection

Detects overheating and stops the motor.

KITO RY Series Wire Rope Hoists

Features and Benefits

Low-Load High-Speed Function

Operates at 1.5 times the standard high speed with a load less than 25% of rated capacity.

Premium Wire Rope (IWRC, High-Strength Wire Rope)

Provides high resistance to fatigue and wear.

Rope Drum

Deep grooved, high strength drum for durability and long service life.

Full 360° Rope Guide

Made of a high strength polymer for durability, keeps the rope securely in the groove on the drum. Simple design makes replacement easy.

Externally Adjustable Upper/Lower Limit Switches

Set the range of operation with easy adjustment.

Upper Emergency Paddle Limit

Final limit in accordance with AS1418.

Operating Conditions

Recommended for -20° to 40° C and humidity of 90% or less.

Electronic Overload Limiter
Detects overload instantaneously and shuts off the circuit for lifting.

Standard Rubber Trolley Bumpers
Provides protection from collisions.

Built-In Drop Stops
Security for the operator and the equipment.

Standard Guide Rollers
Reduce wheel friction and noise while providing smooth travel and increased life of wheel and beam.

VFD Control – Hoist and Trolley
Soft start/stop minimizes load swing. High and low speed adjustability.

Count Hour Meter
Records and displays the number of starts and hoist on time which is valuable for preventive maintenance. Integral to the VFD.

Heavy Duty Hoist Motor
Totally enclosed fan cooled (TEFC) motor with class F insulation and a ribbed frame for maximum cooling and durability.

Electronic Thermal Motor Protection
Detects overheating and stops the motor.

High Performance Motor Brakes
The Pull-Rotor motor brake on 5t and Magnetic Disc Brake on 10t provide reliable operation and exceptional durability. **Maintenance free up to 1 million starts.**

KITO RY Series Wire Rope Hoists

Standard Specifications and Dimensions



5 Ton

KITO RY Series wire rope hoists are designed for safety, reliability and performance. These ultra-low headroom wire rope hoists have an M5 duty rating for high demand applications and comes standard with VFD controls for ultimate lifting and lowering accuracy.

Features and Benefits

VFD Control - Hoist and Trolley

Soft start/stop minimizes load swing. High and low speed adjustability.

Low-Load High-Speed Function

Operates at 1.5 times the standard high speed with a load less than 25% of rated capacity.

Premium Wire Rope (IWRC, High-Strength Wire Rope)

Provides high resistance to fatigue and wear.

Full 360° Rope Guide

Made of a high strength polymer for durability, keeps the rope securely in the groove on the drum. Simple design makes replacement easy.

Rope Drum

Deep grooved, high strength drum for durability and long service life.

High Performance Pull-Rotor Motor Brake

Extremely durable and reliable, this advanced design contains no brake coil to fail like conventional disc brakes. Maintenance free up to 1 million starts.

Externally Adjustable Upper/Lower Limit Switches

Set the range of operation with easy adjustment.

Electronic Overload Limiter

Detects overload instantaneously and shuts off the circuit for lifting.

Standard Upper Emergency Paddle Limit

Final limit in accordance with Australian Standard AS 1418.

Heavy Duty Fan Cooled Hoist Motor

Totally enclosed fan cooled (TEFC) motor with class F insulation and a ribbed frame for maximum cooling and durability.

Standard Rubber Trolley Bumpers

Provides protection from collisions.

Electronic Thermal Motor Protection

Detects overheating and stops the motor

Count Hour Meter

Records and displays the number of starts and hoist on time which is valuable for preventive maintenance. Integral to the VFD.

Standard Guide Rollers

Reduced wheel friction and noise providing smooth travel and increased life of wheel and beam.

Built-In Drop Stops

Security for the operator and the equipment.

Trolley Wheels

Fit flat or tapered beam flange.

Standard Hoist/ Trolley Specifications

Capacity Range

5 t / 10 t

Standard Voltage

415-3-50

Lifting Heights

5t – 7.6m & 10.2m
10t – 9m & 12m

Lifting Speeds

5t – 5.0~0.8 m/min
5t – 8.0~1.33 m/min
10t – 6.0~1.0 m/min

Flange Width Range

5t – 125mm to 350mm
10t – 150mm to 350mm
5t & 10t – 351mm to 500mm

Classification

ISO M5

Control Voltage

24V

Intermittent Rating*

40/20 % ED

Short Time Rating*

60 min

Enclosure

Hoist/Trolley – IP44

Conformance

AS 1418

Operating Conditions

Recommended for -20°C to 40°C and humidity of 90% or less.

Mounting

Ultra-Low Headroom

Wheels

Will operate on a tapered or flat beam flange.

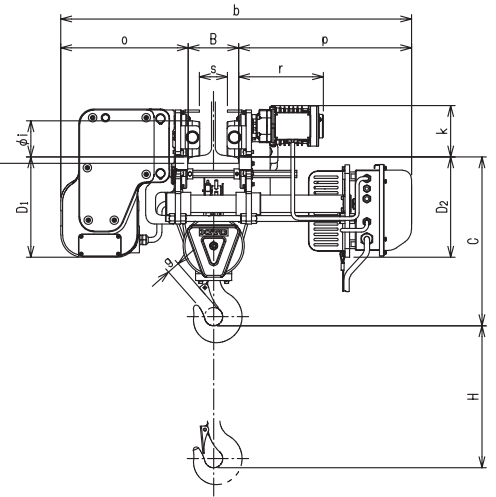
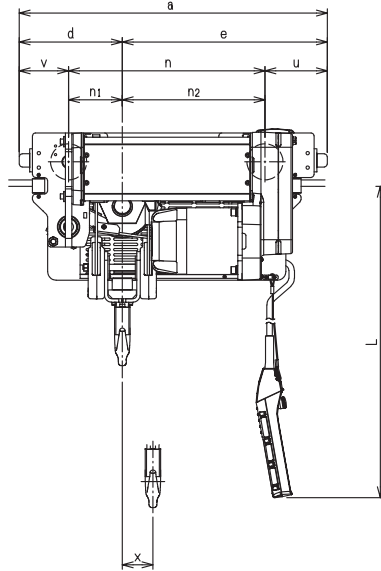
* See page 14 for additional information.

KITO RY Series Wire Rope Hoists

Standard Specifications and Dimensions



5 Ton



5 Ton

SPECIFICATIONS

Capacity (t)	Code	Lift (m)	Flange width (mm)	Inverter for lifting			Inverter for traversing		Wire rope			ISO ^{*1}	Weight ^{*2}	
				Motor output (kW)	Speed when loaded: High speed to low speed (m/min)	Speed during low loading (m/min)	Motor output (kW)	Speed (m/min)	Rope diameter (mm)	Number of falls	Reeving		Main unit (kg)	Hook (kg)
5	RYLB050ISIS0735	7.6	125 to 350	5.0	5.0 to 0.8	7.5	0.4	20 to 3.3	φ 9	4/1	6 x P・WS(26) Compliant with JIS G 3546 2160N/mm ²	M5	440	35
	RYLB050ISIS0750		351 to 500										445	
	RYLB050IHIS0735		125 to 350	8.0	8.0 to 1.3	12.0							460	
	RYLB050IHIS0750		351 to 500										465	
	RYLB050ISIS1035	10.2	125 to 350	5.0	5.0 to 0.8	7.5							475	
	RYLB050ISIS1050		351 to 500										480	
	RYLB050IHIS1035		125 to 350	8.0	8.0 to 1.3	12.0							495	
	RYLB050IHIS1050		351 to 500										500	

*1 ISO: This classification refers to ISO 4301-1 and applies to the mechanical components including gears and bearings except for consumable parts.

*2 Weight: The weight of the main unit includes the weight of the hook.

DIMENSIONS

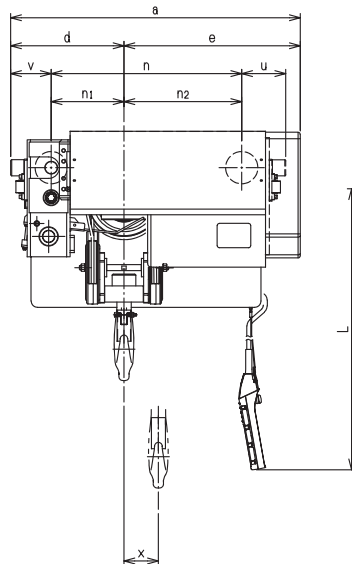
Capacity (t)	Code	Standard lift (m)	Flange width (mm)	Dimension (mm)																		
		H	B	C	D	L	a	b	d	e	g	i	k	o	p	r	s	x				
5	RYLB050ISIS0735	7.6	125 to 350	735	348	7300	1279	1390	357	922	45	φ 125	186	441	824 to 599	342	B-80	154				
	RYLB050IHIS0735		351 to 500					1540							748 to 599							
	RYLB050ISIS0750		9900				1491			1134					824 to 599			206				
	RYLB050IHIS0750														748 to 599							
	RYLB050ISIS1035	10.2	125 to 350			9900	1491	1390		1134	45	φ 125	186	441	824 to 599	342	B-80	206				
	RYLB050IHIS1035		351 to 500					1540							748 to 599							
	RYLB050ISIS1050		1540					1134							824 to 599			206				
	RYLB050IHIS1050														748 to 599							

KITO RY Series Wire Rope Hoists

Standard Specifications and Dimensions



10 Ton



10 Ton

SPECIFICATIONS

Capacity (t)	Code	Lift (m)	Flange width (mm)	Inverter for lifting			Inverter for traversing		Wire rope			ISO*1	Weight*2	
				Motor output (kW)	Speed when loaded: High speed to low speed (m/min)	Speed during low loading (m/min)	Motor output (kW)	Speed (m/min)	Rope diameter (mm)	Number of falls	Reeving		Main unit (kg)	Hook (kg)
10	RYLC100ISIS0935	9	150 to 350	13.2	6.0 to 1.0	9.0	0.75	20 to 3.3	φ 13	4/1	IWRC 6 x PWS (31) Compliant with JIS G 3546 2160N/mm ²	M5	1015	90
	RYLC100ISIS0950		351 to 500										1025	
	RYLC100ISIS1235	12	150 to 350										1090	
	RYLC100ISIS1250		351 to 500										1100	

*1 ISO: This classification refers to ISO 4301-1 and applies to the mechanical components including gears and bearings except for consumable parts.

*2 Weight: The weight of the main unit includes the weight of the hook.

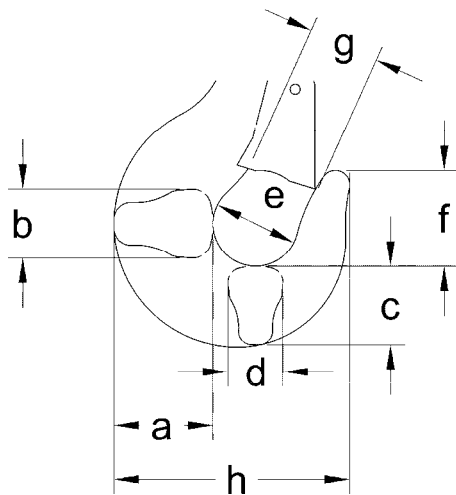
DIMENSIONS

Capacity (t)	Code	Standard lift (m)	Flange width (mm)	Dimension (mm)														
		H	B	C	D	L	a	b	d	e	g	i	k	o	p	r	s	x
10	RYLC100ISIS0935	9	150 to 350	885	388	8700	1348	1633	528	820	72	φ 150	256	628	855 to 655	631	B-105	160
	RYLC100ISIS0950		351 to 500					1784							804 to 655			
	RYLC100ISIS1235	12	150 to 350			11700	1563	1633	1035	855 to 655					213			
	RYLC100ISIS1250		351 to 500					1784		804 to 655								

Options and Technical Data

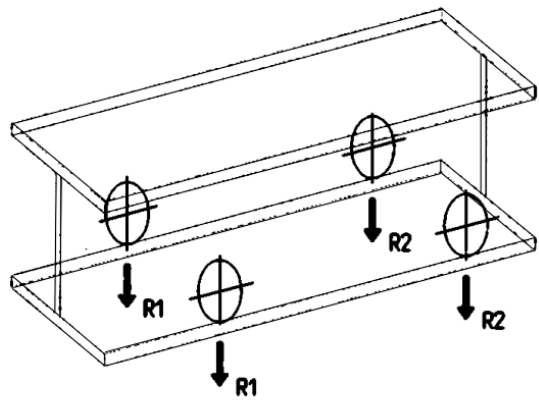
BOTTOM HOOK DIMENSIONS

Capacity (t)	a (mm)	b (mm)	c (mm)	d (mm)	e (mm)	f (mm)	g (mm)	h (mm)
5	80	63	67	53	71	80	45	194
10	112	89	95	75	100	117	72	282



Options and Technical Data

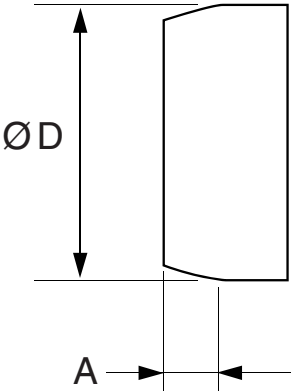
REACTION FORCES AT RATED LOAD					
Capacity (t)	KITO RY Series Wire Rope Hoists Wheel Reaction Forces				
	Product Code	Lift (m)	Flange width (mm)	R1 (kg)	R2 (kg)
5	RYLB050ISIS07(35/50)	7.6	125 to 500	2157	568
	RYLB050IHIS07(35/50)				
	RYLB050ISIS10(35/50)	10.2		2285	463
	RYLB050IHIS10(35/50)				
10	RYLC100ISIS09(35/50)	9	150 to 500	3406	2107
	RYLC100ISIS12(35/50)	12		3844	1708



Trolley Hoist Wheel Reaction Forces

Options and Technical Data

TROLLEY WHEEL DIMENSIONS		
Capacity (t)	A (mm)	ϕD (mm)
5	26	125
10	34	150



Options and Technical Data

COMPLIANCE

KITO RY Series Wire Rope Hoists are produced to comply with the Australian Standard AS 1418.

PRODUCT CODE

①	②	③	④	⑤	⑥	⑦	⑧	⑨	⑩	⑪	⑫	⑬	⑭	⑮
R	Y	L	B	0	5	0	I	H	I	S	0	7	3	5
Model code			Series code	Capacity			Lifting speed		Traversing speed		Lifting range		Flange width	

① to ③ : Model Code

RYL	Low headroom type

⑩ to ⑪ : Traversing speed

IS	Inverter dual speed, standard

④ : Series

B	05 Series
C	10 Series

⑫ to ⑬ : Lifting range

07	7.6m
09	9m
10	10.2m
12	12m

⑤ to ⑦ : Capacity

050	5t
100	10t

⑧ to ⑨ : Lifting speed

IH	Inverter dual speed, high
IS	Inverter dual speed, standard

⑭ to ⑮ : Flange width

35	5t	125 to 350mm
	10t	150 to 350mm
50	5t	351 to 500mm
	10t	



www.kitopwb.com.au
www.kito.com

VIC

441 Grimshaw Street Bundoora
VIC Australia 3083
PHONE: 1300 792 262
vicsales@kitopwb.com.au

QLD

1/119 Bandara Street
Richlands QLD 4077
PHONE: +61 7 3375 1288
qldsales@kitopwb.com.au

WA

2/11 Mallaig Way
Canning Vale WA 6155
PHONE: +61 8 9256 2499
wasales@kitopwb.com.au

Rev 1 Copyright © 2022
Item No. C-RY-EWRH-KP

Specifications and dimensions are
subject to change without notice.

Distributed by: